

GRAND ISLAND HS LESSON PROGRESSION

Lesson Progression-Technique

Goal: developing fluency and facility

Concert Band

- Major Scales (in 8th notes mm=92)
 - 1 Octave-brass
 - 2 Octave-woodwinds, percussion
 - 4 orders
 - Circle of 4ths
 - Circle of 5ths
 - Chromatic Ascending
 - Chromatic Descending
- Rhythmic Variations

- Chromatic Scale-Full range
 - Minimum speed: 8th notes mm=92
 - In duple and triple meter

Wind Ensemble

- Major Scales
 - 2 octave-brass
 - 3 octave-woodwind
- Technique Packet-not memorized
 - Includes all 15 Major and minor keys
 - Scales in 3rds
 - Arpeggios
- Minor Scales

Lesson Progression-Rhythm

Goal: developing rhythmic independence

Concert Band

- Basic to Intermediate simple and compound meter rhythm charts

Wind Ensemble

- Intermediate to advanced simple, compound and mixed meter rhythm charts

Lesson Progression-Literacy

Goal: independence in music reading, theoretical understanding and application of technique in literature

Concert Band

- Lesson Book Completion of Student 3
(Belwin Student Instrumental Course)
- Wind Ensemble Audition

Wind Ensemble

- Developing *independence* of tone production, intonation, balance, blend, multiple articulations, vibrato

**Yes, we address the above skills at younger levels. The emphasis here is that the students are becoming responsible for making adjustments without teacher prompt.*

Anatomy of a Lesson

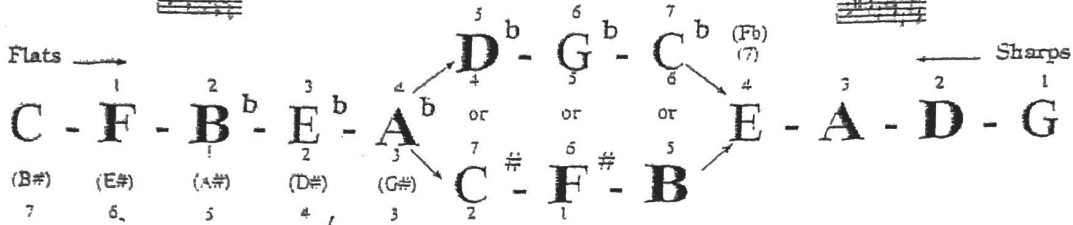
CONCERT BAND

Rhythm chart
Major Scales
Chromatic Scale
Lesson Book

WIND ENSEMBLE

Rhythm chart
Technique Packet/Scale Variations
Development of independent musician
Alternative Rehearsal Techniques-Ed Lisk

Circle of 4ths



The top number indicates the number of flats or sharps in that particular scale.
 The bottom number indicates the correct order of flats or sharps.

Woodwind Choir

- | | | | |
|---|---|--|---|
| Group 1
Piccolo
Oboe
Eb Clarinet
1st Flute
1st Clarinet
1st Alto Sax | Group 2
2nd Flute
2nd Clarinet
2nd Alto Sax | Group 3
3rd Clarinet
Alto Clarinet
Tenor Sax | Group 4
Bass Clarinet
Bassoons
Bari Sax
Contra Clarinets |
|---|---|--|---|

Brass Choir

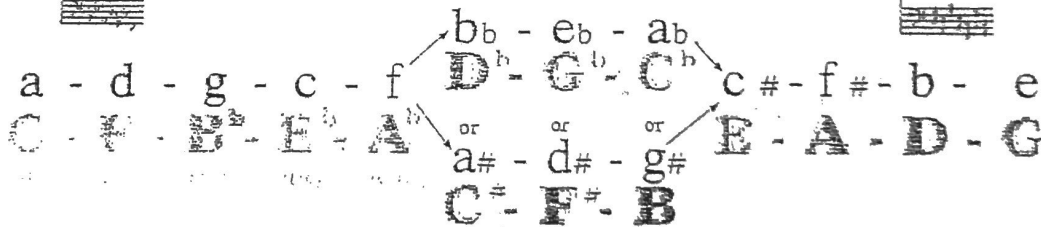
- | | | | |
|--|---|--|--|
| Group 1
1st Cornet
1st Trumpet
1st French Horn
1st Trombone | Group 2
2nd Cornet
2nd French Horn
2nd Trombone | Group 3
3rd Cornet
2nd Trumpet
3rd Trombone
3rd & 4th French Horn | Group 4
Baritone
Euphonium
Tuba
String Bass |
|--|---|--|--|

Percussion

- Vibraphone (soft mallets) Xylophone (soft mallets) Marimba (soft mallets) Tympani

© Copyright 1991 MEREDITH MUSIC PUBLICATIONS

Circle of 4ths - Minor Scales



The small letter (a - d, etc.) above the shadowed capital letter indicates the relative minor scale.

Woodwind Choir

- | | | | |
|---|---|--|---|
| Group 1
Piccolo
Oboe
Eb Clarinet
1st Flute
1st Clarinet
1st Alto Sax | Group 2
2nd Flute
2nd Clarinet
2nd Alto Sax | Group 3
3rd Clarinet
Alto Clarinet
Tenor Sax | Group 4
Bass Clarinet
Bassoons
Bari Sax
Contra Clarinets |
|---|---|--|---|

Brass Choir

- | | | | |
|--|---|--|--|
| Group 1
1st Cornet
1st Trumpet
1st French Horn
1st Trombone | Group 2
2nd Cornet
2nd French Horn
2nd Trombone | Group 3
3rd Cornet
2nd Trumpet
3rd Trombone
3rd & 4th French Horn | Group 4
Baritone
Euphonium
Tuba
String Bass |
|--|---|--|--|

Percussion

- Vibraphone (soft mallets) Xylophone (soft mallets) Marimba (soft mallets) Tympani

© Copyright 1991 MEREDITH MUSIC PUBLICATIONS

Full Range Chromatic Scale

Trumpet in B \flat

The image shows a musical score for a Full Range Chromatic Scale for Trumpet in B \flat . The score is written on two staves in 4/4 time. The first staff contains the ascending scale, starting on B \flat and ending on F \sharp . The second staff contains the descending scale, starting on F \sharp and ending on B \flat . The notes are marked with sharp and flat symbols to indicate the correct pitch for the instrument. A measure number '5' is placed at the beginning of the second staff.

Technique in Concert Eb Major

Major Scale

Musical notation for the Major Scale in Eb major, 2/4 time signature. The scale is written on a single staff, starting on the first line (F) and ending on the first space (Bb). The notes are: F, G, Ab, Bb, C, D, Eb, F.

Chromatic Scale

Musical notation for the Chromatic Scale in Eb major, 3/4 time signature. The scale is written on a single staff, starting on the first line (F) and ending on the first space (Bb). The notes are: F, F#, G, G#, Ab, A, Bb, B, C, C#, D, D#, Eb, E, F.

Scale in 3rds

Musical notation for the Scale in 3rds in Eb major, common time signature. The scale is written on a single staff, starting on the first line (F) and ending on the first space (Bb). The notes are: F, G, Ab, Bb, C, D, Eb, F.

Major Arpeggio

Musical notation for the Major Arpeggio in Eb major, 2/4 time signature. The arpeggio is written on a single staff, starting on the first line (F) and ending on the first space (Bb). The notes are: F, G, Ab, Bb, C, D, Eb, F.

Dominant Arpeggio

Musical notation for the Dominant Arpeggio in Eb major, 2/4 time signature. The arpeggio is written on a single staff, starting on the first line (F) and ending on the first space (Bb). The notes are: F, G, Ab, Bb, C, D, Eb, F.

Clarinet in Bb

Technique in Concert c minor

Minor Arpeggio



Harmonic



Melodic Minor

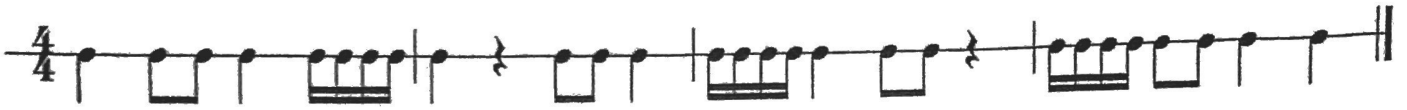


Minor Arpeggio

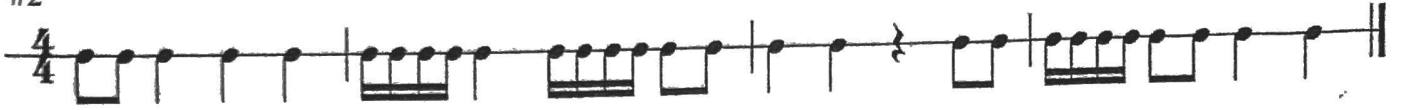


Rhythmic Sightreading 2 - 3

#1



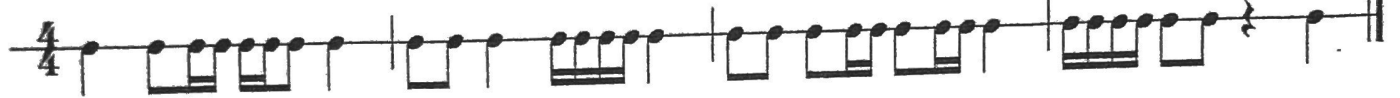
#2



#3



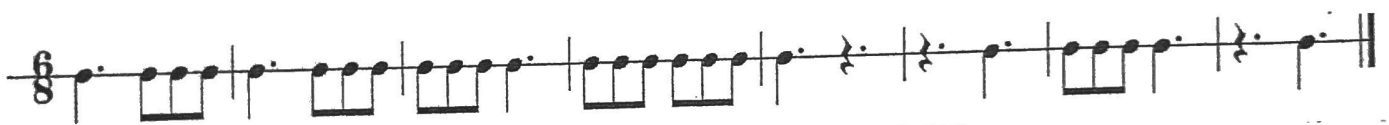
#4



#5



#6



Rhythmic Sightreading ~ 18

#1



#2



#3



#4



#5



CHART 44

1 $\frac{2}{4}$ *Di Di Di Di Di Di Too*

2 $\frac{2}{4}$ *Di Di Di Ta*

3 $\frac{3}{4}$

4 $\frac{3}{4}$

CHART 48

1 $\frac{3}{8}$

2 $\frac{3}{8}$

3 $\frac{3}{8}$

4 $\frac{3}{8}$

5 $\frac{3}{8}$

6 $\frac{3}{8}$

TPT

Maestoso

③ *ff*

mf *mp*

p *f*

p legato

metto) The turn is a musical ornament consisting of four notes including (1) the scale tone above (2)

Study in F Minor

Andante with feeling $\text{♩} = 76$

p *f* *pp*

p *faster and cresc.*

rit. *p*

softer and slower

Allegretto ♩ = 69

28

mp

poco a poco cresc.

f

mf

mf

mp

3

Moderato ♩ = 100

31

mf

mf

mf

f